

# DISTRICT-WIDE WAYFINDING SIGN PLAN

Trails Linking Communities

September 10, 2015



Forest Preserve District  
of DuPage County

*Connecting People to Nature for 100 Years*

# SIGN PLAN GOALS

- Develop a consistent aesthetic to present a favorable image of the District
- Reduce “Sign Pollution”
- Increase user awareness
- Protect natural resources

# SIGN PLAN PROGRESS

Staff Committee formed in September  
2014

- Provided input on the planning strategy
- Provided assistance with public outreach
- Provided input on sign design and placement guidelines

# SIGN PLAN PROGRESS

## Research and Input Gathering


- Online Survey
- Collected responses from 10/10/2014 – 1/5/2015
- 911 Respondents
- Questions
  - Most common trail activity
  - Most visited preserves
  - Most important trail sign type

For question 10, think about DuPage County forest preserve trails in general.

10. How important is it to have the following along the trails? (Make 1 the most important feature and 7 the least important)

Mile markers \_\_\_\_\_

ations. \_\_\_\_\_

 **Forest Preserve District of DuPage County**

**Trail Survey**

1. Have you used a trail within a DuPage County forest preserve in the past six months?  
☐ Yes ☐ No \_\_\_\_\_

2. How often do you use a DuPage County forest preserve trail?  
☐ Every day ☐ A few times a month \_\_\_\_\_  
☐ Not every day but a few times a week ☐ A few times over the past six months \_\_\_\_\_  
5 or older \_\_\_\_\_

3. What days do you use DuPage County forest preserve trails?  
☐ Weekdays ☐ Weekends ☐ Both \_\_\_\_\_

4. What time of day do you primarily use DuPage County forest preserve trails?  
☐ Morning ☐ Afternoon ☐ Evening ☐ I don't use the trails at \_\_\_\_\_  
any one particular time.

5. Why do you use DuPage County forest preserve trails? (You can pick up to three answers. Put a 1 by the most important reason. If needed, put a 2 by your second most important reason and a 3 by your third.)  
\_\_\_\_ To exercise \_\_\_\_\_ To walk my pet \_\_\_\_\_  
\_\_\_\_ To relax \_\_\_\_\_ To get to work or other destination instead of driving \_\_\_\_\_  
\_\_\_\_ To look at nature \_\_\_\_\_ Other Please specify \_\_\_\_\_

6. What do you do when you're on a DuPage County forest preserve trail? (You can pick up to three answers. Put a 1 by the activity you do the most. If needed, put a 2 by your second most common activity and a 3 by your third.)  
\_\_\_\_ Walk \_\_\_\_\_ Bike \_\_\_\_\_ Jog or run \_\_\_\_\_ Ride horseback \_\_\_\_\_  
\_\_\_\_ Cross-country ski or other winter sports \_\_\_\_\_ Other Please specify \_\_\_\_\_

For questions 7 through 9, think about the last time you used a DuPage County forest preserve trail.

7. What forest preserve did you visit? Name \_\_\_\_\_  
☐ I don't remember the name \_\_\_\_\_

8. What did you spend the most time doing on the trail?  
☐ Walking ☐ Riding horseback \_\_\_\_\_  
☐ Biking ☐ Cross country skiing or other winter sports \_\_\_\_\_  
☐ Jogging or running ☐ Other Please specify \_\_\_\_\_

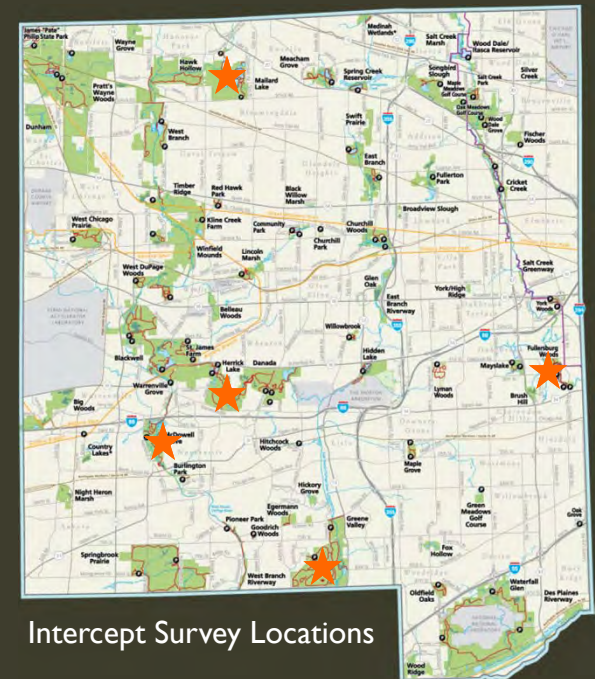
9. If you looked at a map before you started on the trail, where did you find that map?  
☐ I didn't look at a map. ☐ On the Forest Preserve District's website, dupageforest.org \_\_\_\_\_  
☐ At the parking lot ☐ On another website \_\_\_\_\_  
☐ On a brochure somewhere other than the parking lot ☐ I don't remember. \_\_\_\_\_

1

# SIGN PLAN PROGRESS

## Research and Input Gathering

- Trail Intercept Survey by volunteers and rangers
  - Fullersburg Woods, Greene Valley, Herrick Lake, Mallard Lake, McDowell Grove
- Outreach to trail groups
- Outreach to other local agencies responsible for trails
- Research Sign Plans of other similar and nation-wide agencies
- Research national sign standards



# SIGN PLAN PROGRESS

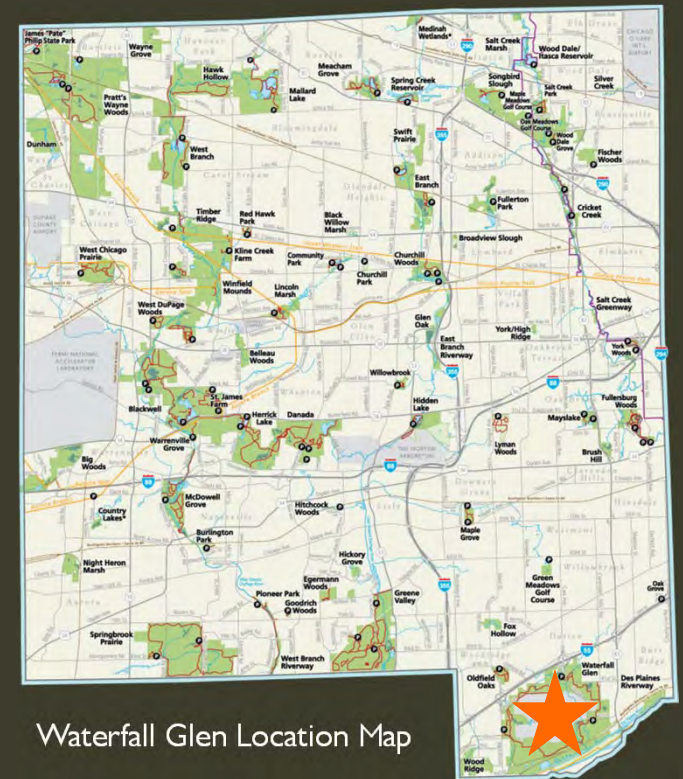
## Standard Sign Manual Development

- Document standards
- Outline process to develop preserve specific sign plans
- Establish priorities
- Wayfinding sign system

# SIGN PLAN PROGRESS

## Wayfinding Sign System

- Waterfall Glen Forest Preserve in Darien
- One of our most popular preserves
- Large, developed loop system
- Many intersecting trails and service drives

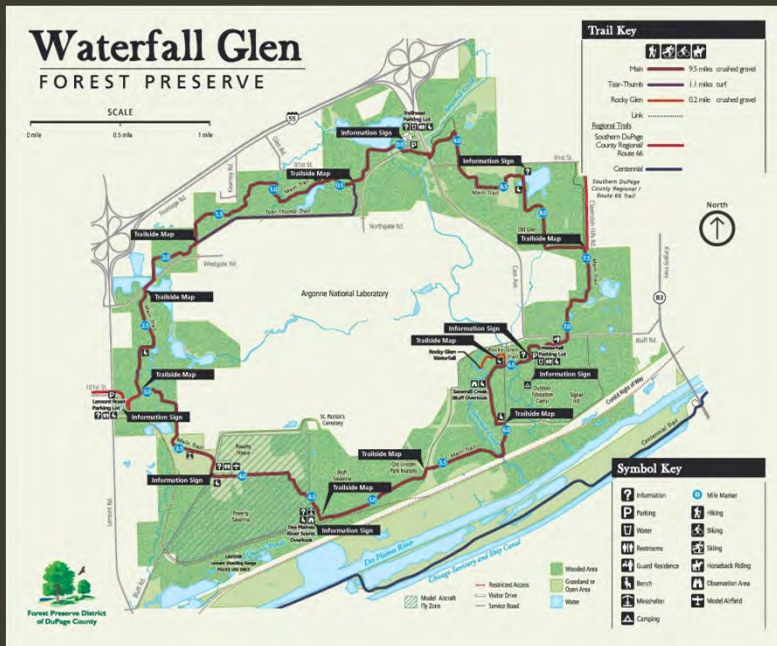


Waterfall Glen Location Map



# WAYFINDING SIGNS – WATERFALL GLEN

- Update “You Are Here” maps in existing Visitor Information Signs and Trailside Maps



Locations of “You Are Here” Maps



“You Are Here” Map in V.I. Sign



“You Are Here” Map along trail



# WAYFINDING SIGNS – WATERFALL GLEN

- Sign all service drives to distinguish them from trails at intersections



Intersections of trails and service roads



Service Drive Signs

# WAYFINDING SIGNS – WATERFALL GLEN

- Add street signs where trails cross public roads



Intersections of trails and service roads



New street sign

# WAYFINDING SIGNS – WATERFALL GLEN

- Add wayfinding signs at each trail intersection
  - Top sign – trail name and direction
  - Lower signs – intersecting trail name and direction, closest destinations with direction and distance



Wayfinding sign locations



Wayfinding sign layout



New Wayfinding sign



# WAYFINDING SIGNS – WATERFALL GLEN

- Replace existing mile markers with mile markers that coordinate with the new wayfinding signs



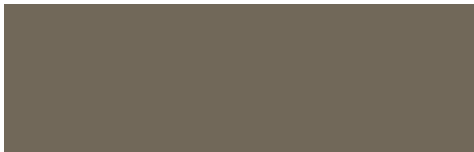
Existing mile marker



Mile marker layout



New Mile marker



# NEXT STEPS

- Complete all installations at Waterfall Glen in 2015
- Implement at other priority preserves as available funds allow:
  - Fullersburg Woods (Oak Brook)
  - Danada and Herrick Lake (Wheaton)
  - Greene Valley (Naperville)
  - Springbrook Prairie (Naperville)
  - Meacham Grove (Bloomington)